

MERCY/St. LUKE'S SCHOOL OF RADIOLOGIC TECHNOLOGY

Program Conference 2011

Dana Schmitz, M Ed, RT(R)



So...what is
Radiologic
Technology
anyway??????

Great question!!!!!!!



Radiologic Technology...

- Is the art and science of applying ionizing radiation to humans to create images of the body that will aid physicians in the detection, diagnosis and treatment of diseases.

-Dana Schmitz, M.Ed., RT(R)

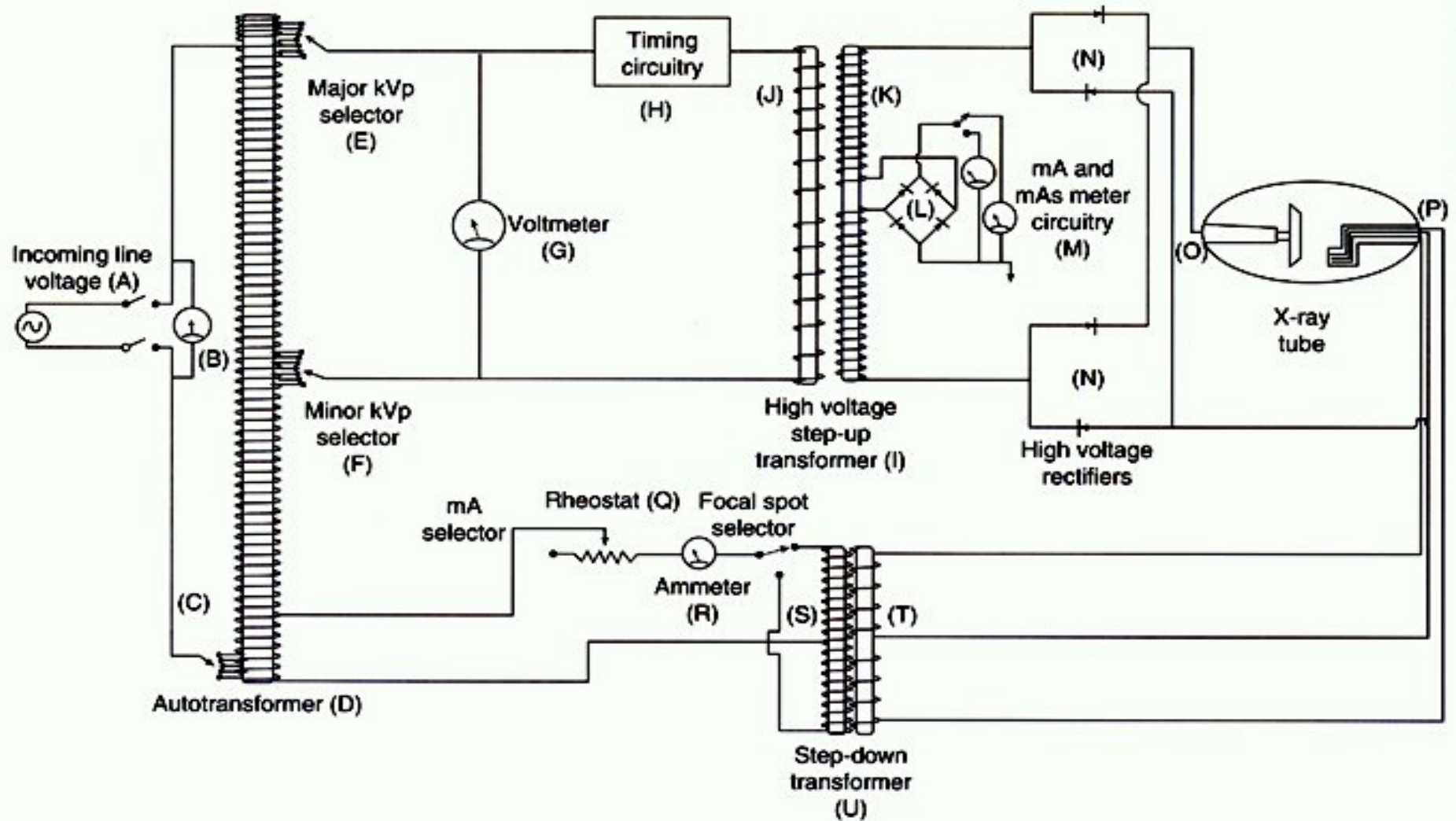


Double-sided coin

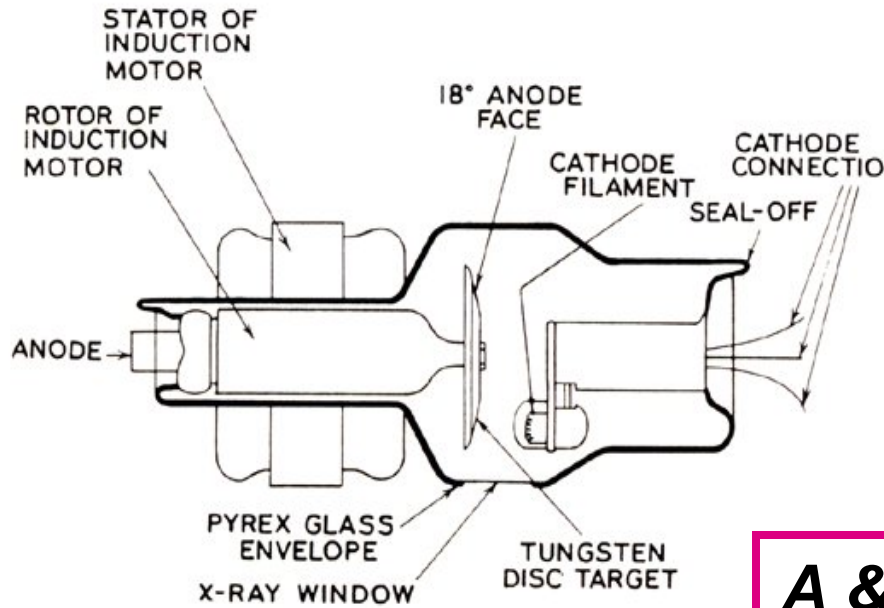
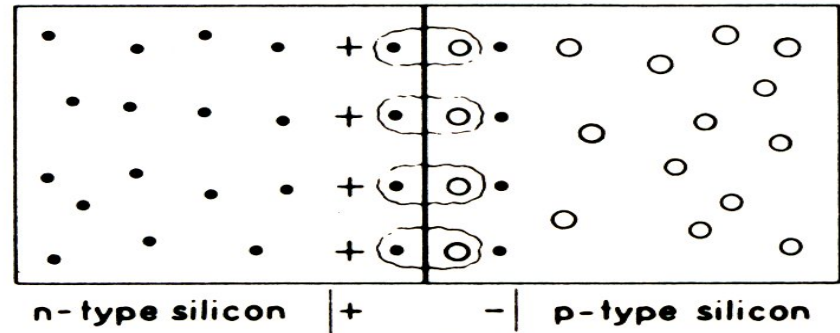
- On one side, we deal with patients on a continual basis so this is a “people profession”.
- Patient contact is not as lengthy per patient as it is in nursing.



- On the other side, this is a science-oriented profession, constantly utilizing *math and science* knowledge.



electrons and holes combine at n-p junction

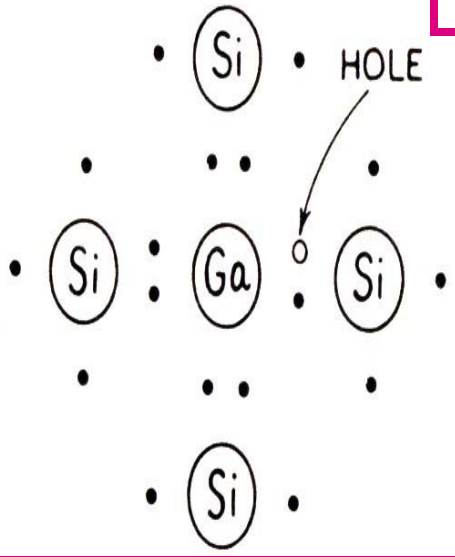
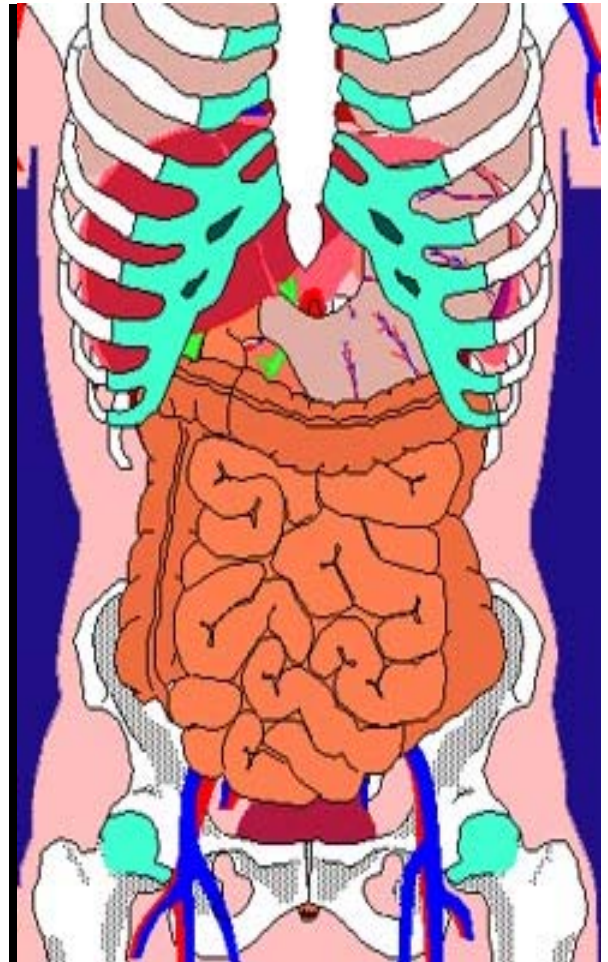
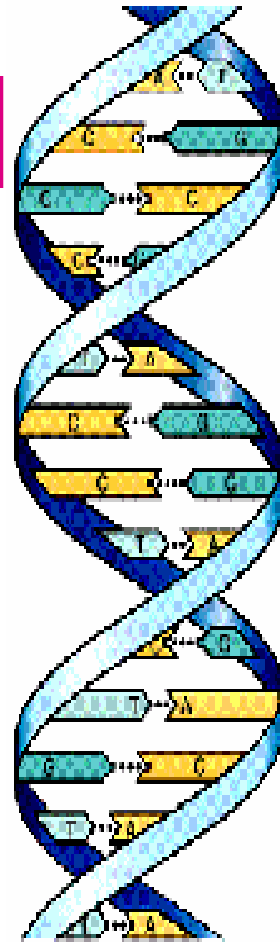


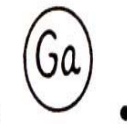
A & P

Physics

Biology

Chemistry




 SYMBOL FOR GALLIUM
 WITH 3 VALENCE ELECTRONS
 ACCEPTOR ATOM

Math, math, math!

- We work with equipment as much as or more than we do with patients.
- Therefore, we must know as much or more about it as we do about patients and their care.



- Mobile equipment used:
 - At patients' bedside
 - In the emergency room
 - In the operating room
 - In the neonatal intensive care unit
 - In pain clinic
 - In the morgue



Normal knee image

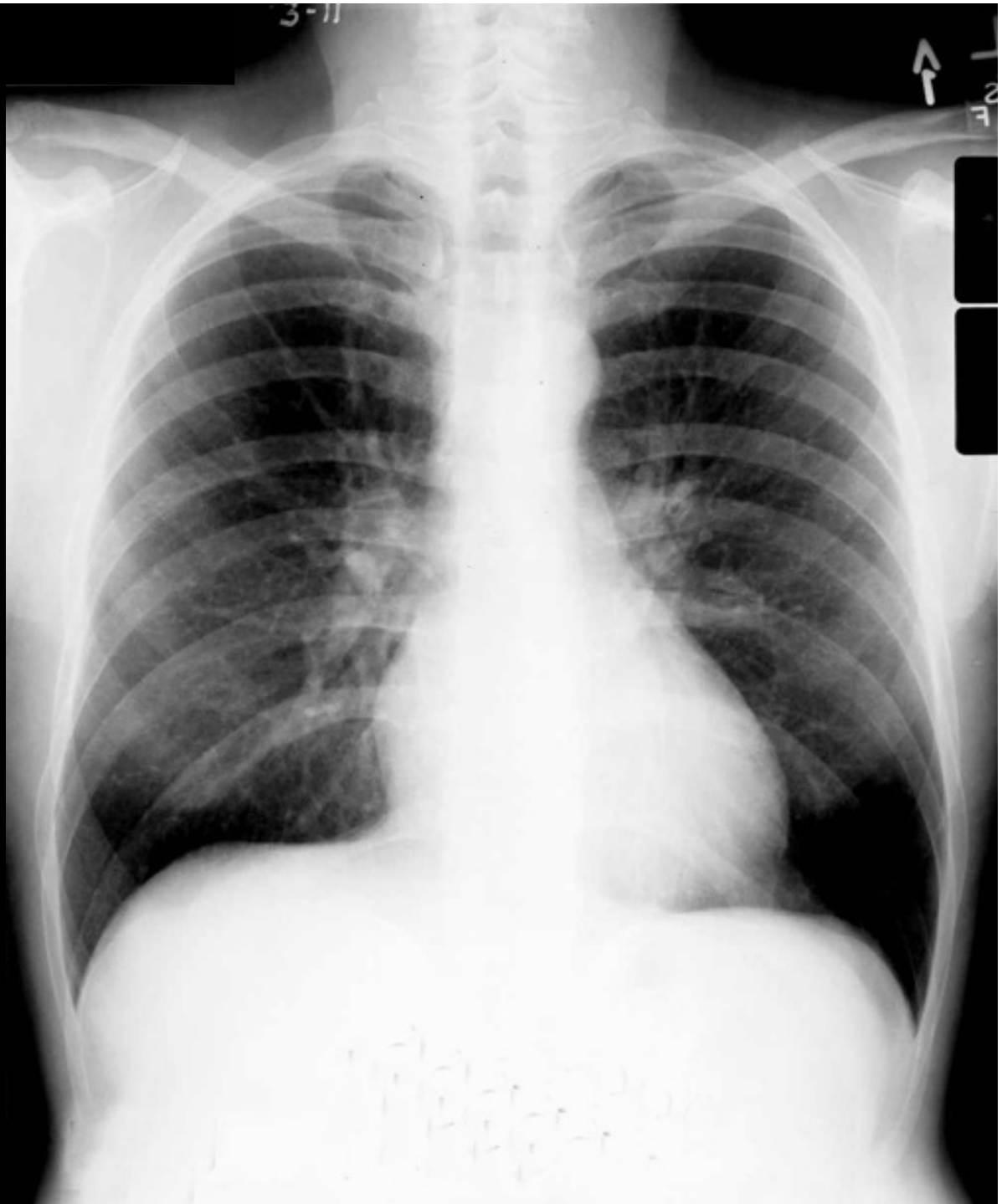


Elbow images obtained during surgical procedure to check hardware placement.



R

Routine chest x-ray, which students perform within the first six weeks of the program. This is the most abundant exam performed in most imaging departments.



Barium Enema-
One fluoroscopy exam we perform with a radiologist in the room who is making active diagnosis during the exam. Contrast media (barium) is introduced into the large intestine through an enema tube which the students/techs insert into the rectum.



Upper GI exam-
Also performed
with a radiologist
in the room
making an active
diagnosis.
Contrast media
(barium) is
introduced into
the stomach by
the patient
drinking the liquid
barium.



Specialization

- Computed Tomography
- Magnetic Resonance Imaging
- Sonography
- Radiation Therapy
- Nuclear Medicine
- Mammography
- Cardiovascular Interventional
- *Students are given exposure to each area and more!*



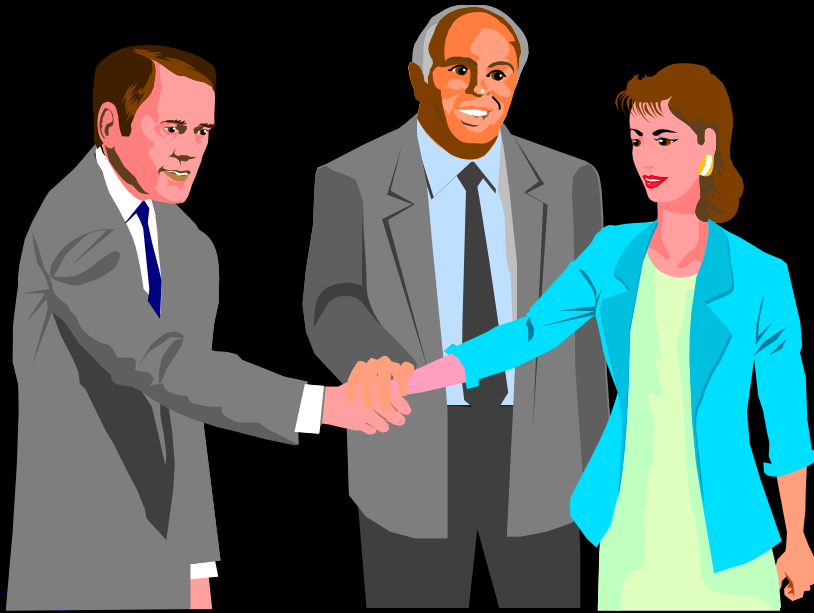
University of Iowa

Bachelor of Science in Radiologic Sciences

- Receive credit for Rad Tech certificate
- Approximately 1 - 2 yrs of gen ed courses
- Apply for modality program of your choice for remainder of degree credits

- These program take 9 – 18 months
 - Sonography, Nuclear Medicine, Radiation Therapy, MRI, CT, Quality Management, Bone Densitometry
- Results in BSRS and multi-credentialed at graduation

TRANSFERRING CREDIT

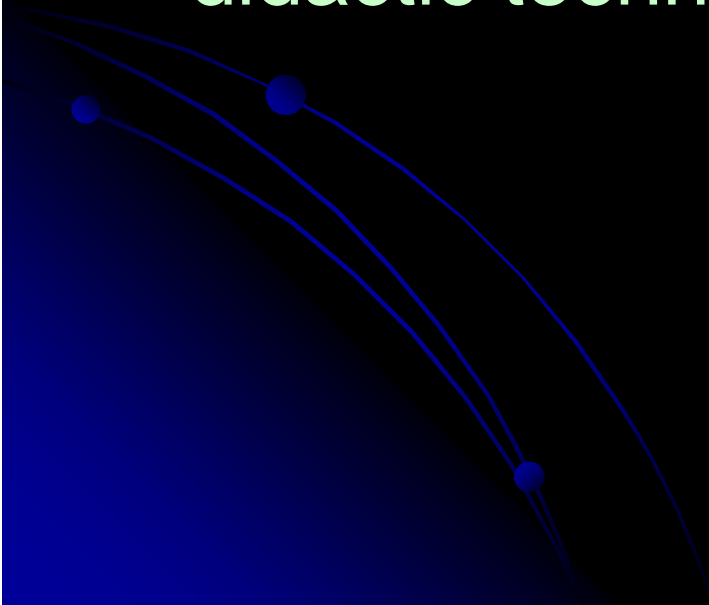


- **KIRKWOOD AWARDS 55 SEMESTER HOURS OF CREDIT TOWARD AN AAS DEGREE IN CAREER STUDIES-HEALTH.**

PROGRAM INFORMATION

SCHOOL MISSION

↳ To provide a high quality education in the profession of Radiologic Technology through the use of competency based clinical education and comprehensive didactic techniques.



ACCREDITATION


- Joint Review Committee on Education in Radiologic Technology
 - Only agency recognized by the US Department of Education to accredit radiography programs
 - Approved to Participate in Title IV by USDE
- 

FACULTY & STAFF

- Dana Schmitz – Program Director
- Roxann Pospisil – Clinical Coordinator @ Mercy Medical Center
- Rochelle Holt – Clinical Coordinator @ St. Luke's Hospital
- Janean Blake - Administrative Assistant
- Monday-Friday 7:30-11:30



LOCATIONS

- CLASSES-Mercy Medical Center and St. Luke's Hospital
 - CLINICAL-Primarily Mercy Medical Center & St. Luke's Hospitals Radiology departments
 - You will have a 1 week rotation at RCI in Cedar Rapids. This is the Radiologists' private office.
- 

- **Students participate in approximately 2700 clinical education hours and 1000 didactic (classroom) hours during the 24 month program.**



No holiday rotations are scheduled.

- **Full-time program (40 hrs/wk) beginning in late June. Most weeks are Mon – Fri, 7 am to 3:30 pm. Limited number of 10:30 am to 7 pm rotations as well as 12:00 noon – 8:30 pm and 3 – 11:30 pm. Weekend rotations in second year.**



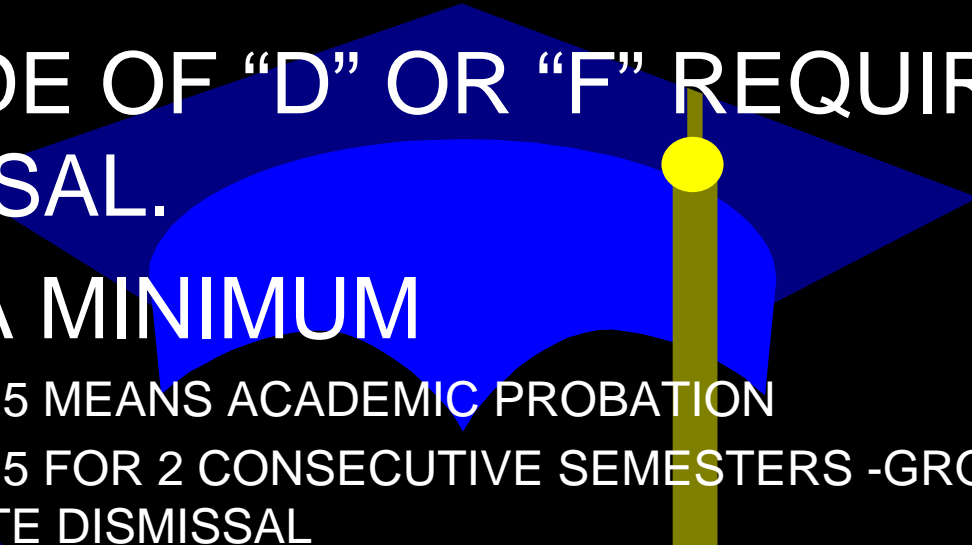
Courses Include...

- **Intro to Radiography & Protection**
- **Professional Ethics**
- **Patient Care I & II**
- **Radiographic Anatomy & Procedures I, II, III**
- **Radiation Bio & Protection**
- **Rad Science I & II**
- **Patient & Personnel Protection**
- **Advanced Procedures**
- **Radiographic Physics**
- **Cross-Sectional Anatomy**
- **Pathology**
- **Film Critique I & II**
- **Special Procedures, Imaging & Equipment**
- **Applied Clinicals I - VI**

GRADING POLICY

- ★ **A+ = 4.25 POINTS – OUTSTANDING (99-100%)**
- ★ **A = 4 POINTS – EXCELLENT (94-98%)**
- ★ **B+ = 3.5 POINTS - ABOVE AVERAGE (91-93%)**
- ★ **B = 3 POINTS – AVERAGE (87-90%)**
- 😊 **C+ = 2.5 POINTS - BELOW AVERAGE (84-86%)**
- 😊 ***C = 2 POINTS - ACCEPTABLE MIN. (80-83%)***
- 😐 **D = 1 POINT – UNSATISFACTORY (75-79%)**
- 😞 **F = 0 POINTS & DISMISSAL (0-74%)**

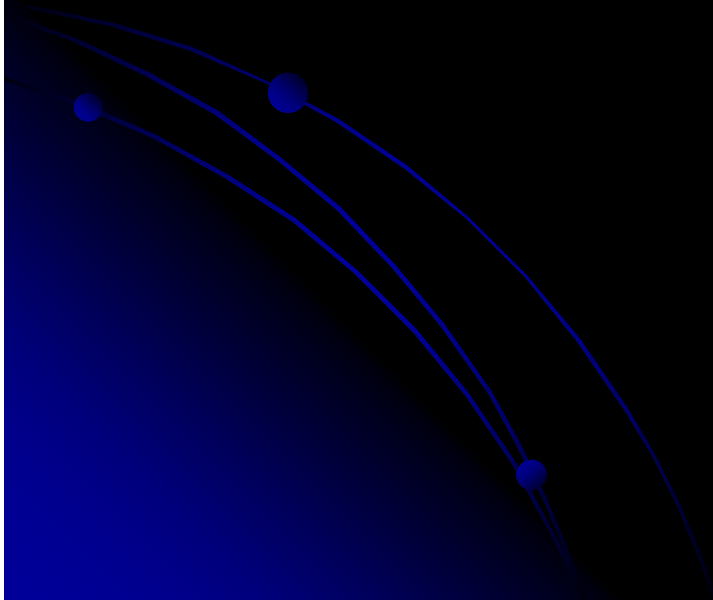
ACADEMIC REQUIREMENTS

- MINIMUM GRADE OF “C” IN ALL COURSES
 - A GRADE OF “D” OR “F” REQUIRES DISMISSAL.
 - 2.5 GPA MINIMUM
 - BELOW 2.5 MEANS ACADEMIC PROBATION
 - BELOW 2.5 FOR 2 CONSECUTIVE SEMESTERS -GROUNDS FOR IMMEDIATE DISMISSAL
- 

ATTENDANCE AND BEHAVIOR EXPECTATIONS

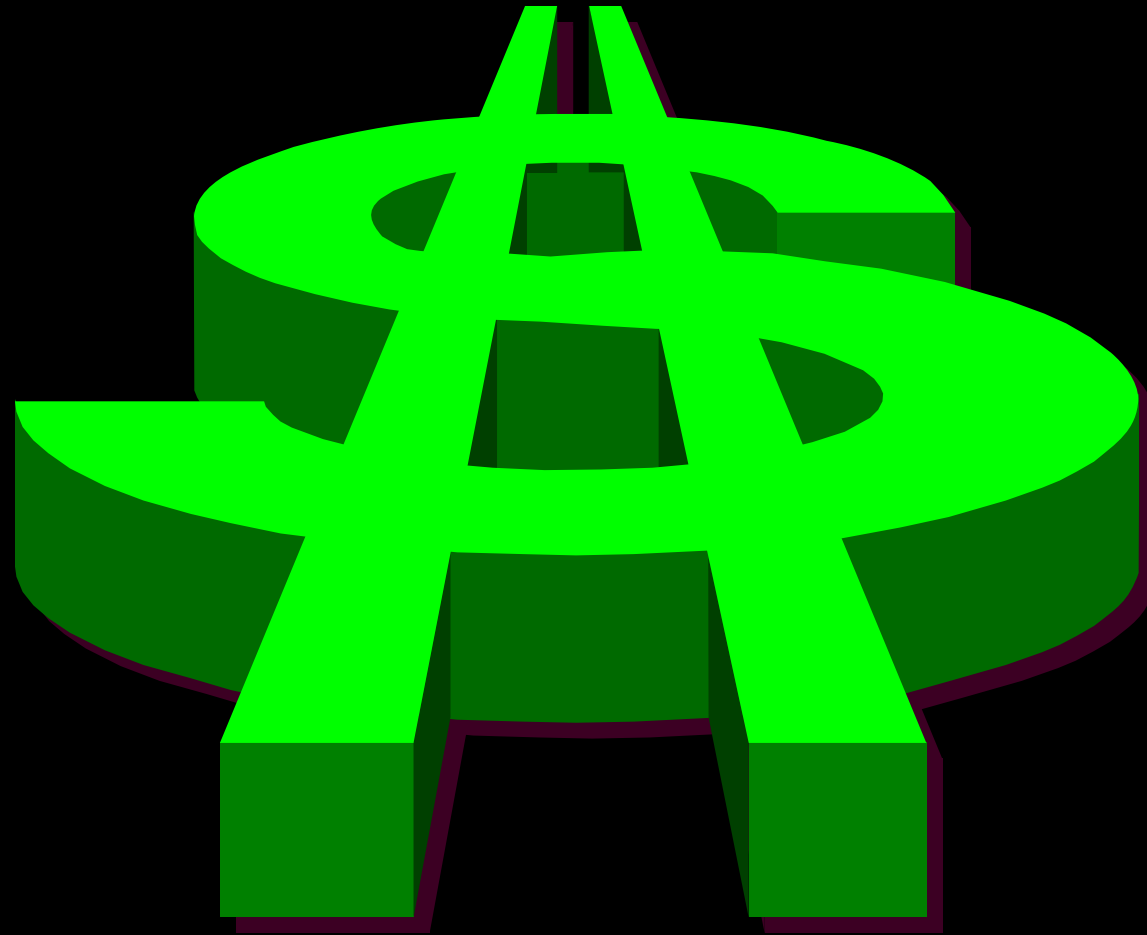
- *STUDENTS ARE EXPECTED TO SHOW HONESTY, MATURITY, MOTIVATION, RESPECT AND INITIATIVE...*
- *STUDENTS ARE RESPONSIBLE FOR THEIR OWN GRADES: WE WILL BUILD THE ROADS AND PUT UP THE ROAD SIGNS, BUT THE STUDENTS MUST DRIVE THE CAR...*

***STUDENTS ARE EXPECTED TO
FOLLOW THE STUDENT HANDBOOK
AND THE AMERICAN SOCIETY OF
RADIOLOGIC TECHNOLOGISTS' CODE
OF ETHICS***



American Registry of Radiologic Technologists (ARRT) Exam

- National credentialing exam
- Graduates are eligible if:
 - \$200 Fee paid
 - Entire curriculum completed
 - All competencies completed
 - Any convictions reviewed by ARRT Ethics Committee
 - Any suspensions/dismissals from an educational institution reviewed by ARRT Ethics Committee



COST OF EDUCATION

TUITION & FEES/Yr.	\$ 3300.00
TEXTBOOKS/2 yrs.	\$ 800.00
UNIFORMS & SHOES/2 yrs.	\$ 600.00

HEALTH INSURANCE_(OPTIONAL) Cost depends on plan chosen and based on part-time status. Reasonably priced and have choice of:

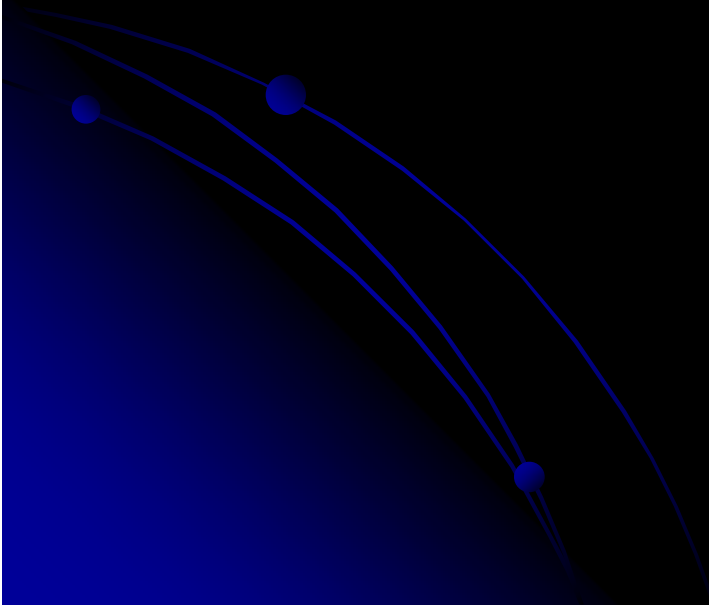
**SINGLE-
EMPLOYEE + ONE-
FAMILY-**

LIVING EXPENSES **???????**

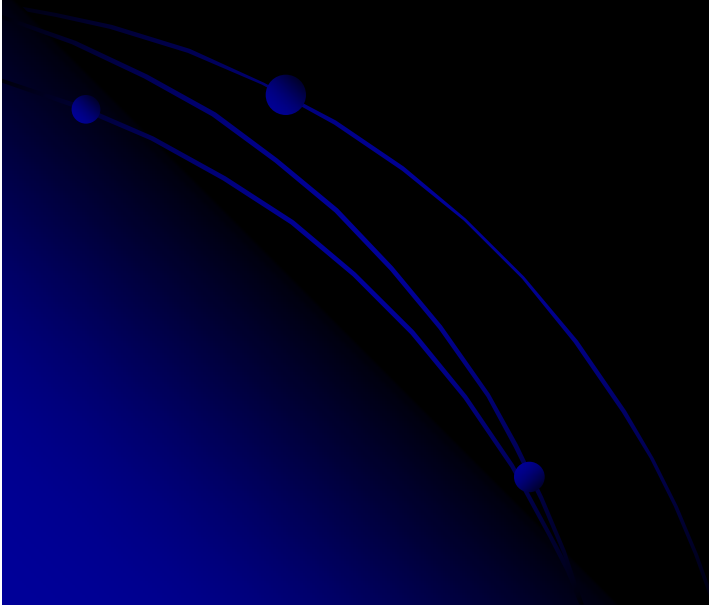
***All costs subject to change**

Placement

- Typically in hospitals and outpatient clinics
- Mobile companies
- Private physician offices



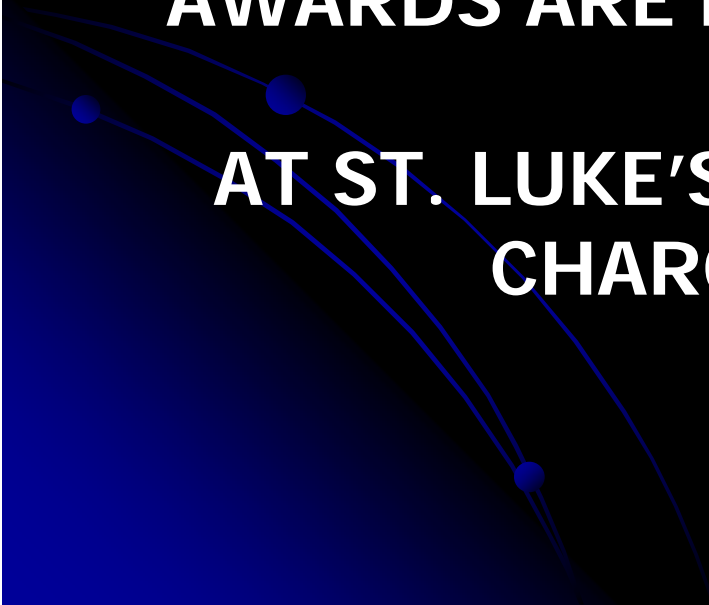
TITLE IV U.S. GOVERNMENT PROGRAMS



FINANCIAL AID

**ALL FEDERAL TITLE IV FINANCIAL AID IS
PROCESSED BY WEBER & ASSOCIATES
USING A WEB-BASED SYSTEM.**

**AWARDS ARE DISBURSED BY THE FINANCE
DEPARTMENT
AT ST. LUKE'S HOSPITAL AFTER TUITION
CHARGES ARE DEDUCTED.**



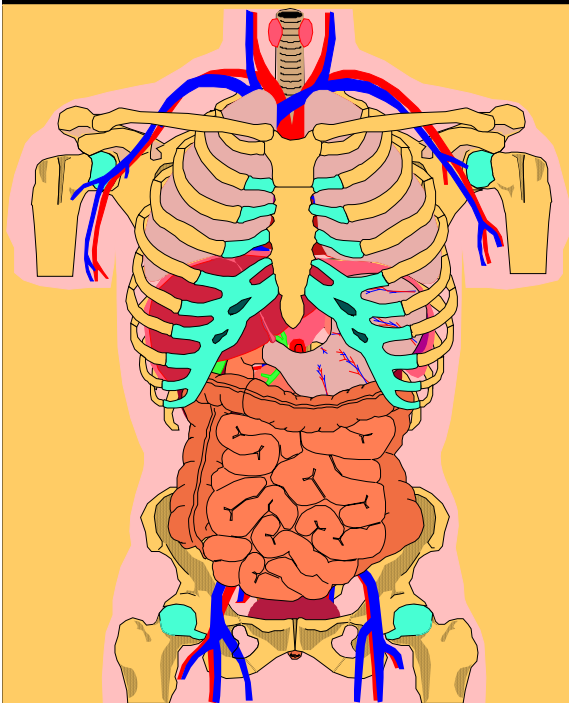
ALL TITLE IV AID BEGINS WITH THE FAFSA

- EACH STUDENT MUST COMPLETE THE FAFSA.
- IT IS PREFERRED THAT YOU DO THIS ONLINE.
 - www.fafsa.ed.gov



KIRKWOOD COMMUNITY COLLEGE

- What do they have to do with this?
- Articulation agreement allows KCC to award 55 SH of transfer credit from MStL to KCC toward an AAS degree.



We have also partnered with KCC to offer a practical way to obtain the required pre-requisite courses needed for application to MStL.

Additionally, the Health Science office helps keep students on track.

Steps in the Process

1. Attend Program Conference to obtain Checklist
2. Apply to KCC (or change major) to Career Studies-Health (can be done on EagleNet)
3. Determine if pre-application minimum requirements are met
4. Successfully complete pre-requisite courses
5. Apply to Mercy/St. Luke's

Pre-app Minimum Requirements

- ☺ Can meet these in 1 of 3 ways;
1. **Already have degree from accredited college**
 - a. Still apply to KCC and have transcripts sent
 2. **Successful completion of these 3 courses;**
 - a. Composition I
 - b. Intro to Psychology
 - c. Intermediate Algebra

If at another college, transcripts must be sent to KCC for evaluation
 3. **Placement test scores (1 of these must be met)**
 - ACT scores of 18 in English and Math & 19 in Reading

OR

 - COMPASS scores of 70, 82, and 43 in Writing, Reading, and Math

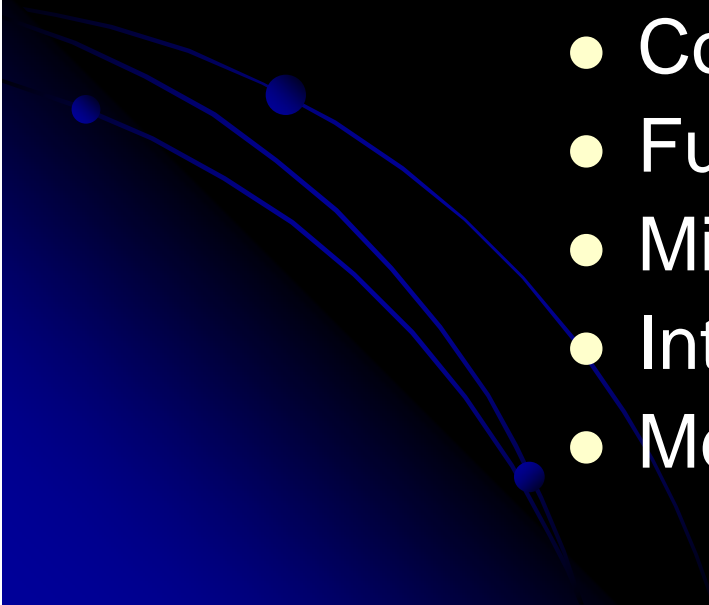
MEETING THE MINIMUM REQUIREMENTS

***DOES NOT GUARANTEE ACCEPTANCE
AT MStL. THEY ARE ONLY USED TO
DETERMINE MINIMUM
QUALIFICATIONS ARE MET TO
CONTINUE IN THE PROCESS.***

***NEXT...PRE-REQUISITE
COURSES.***



PRE-REQS + AAS DEGREE REQUIREMENTS

- A & P I – 4 SH
 - A & P II – 4 SH
 - May sub with Anat (4 SH) & Phys (4 SH)
 - Humanities elective – 3 SH
 - Intro to Psychology – 3 SH
 - Comp I – 3 SH
 - Fundamentals of Oral Comm. - 3 SH
 - Microcomputer Literacy - 1 SH
 - Intermediate Algebra – 4 SH
 - Medical Terminology – 4 SH
- 

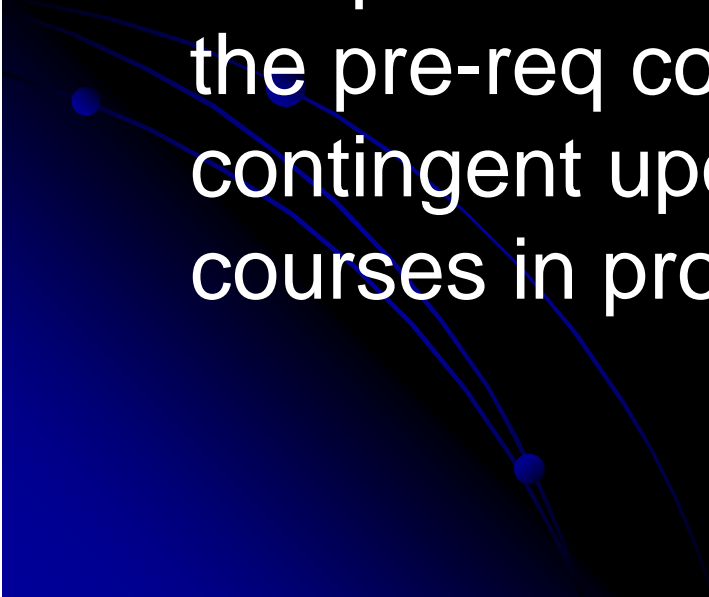
Pre-requisite Courses

- Must be completed with a grade of C- or above
- Transfer credit from other colleges determined by KCC
- No class attempted more than 2 times
- Maintain a 2.5 GPA from pre-req courses

First priority will be given to those completing these courses by the January 15 application deadline.

First priority does NOT mean you will be automatically accepted just because you have the pre-reqs completed.

If you have not completed all pre-reqs by Jan. 15, you will still be considered if you can prove enrollment in the remainder of the pre-req courses. Acceptance will be contingent upon successful completion of courses in progress.



HEALTH SCIENCES OFFICE

It is your responsibility to keep your Checklist updated with Carol or Abby in the Health Sciences office (Rm 221) at KCC. They will verify your checklist as you progress through the process. (398-5566)

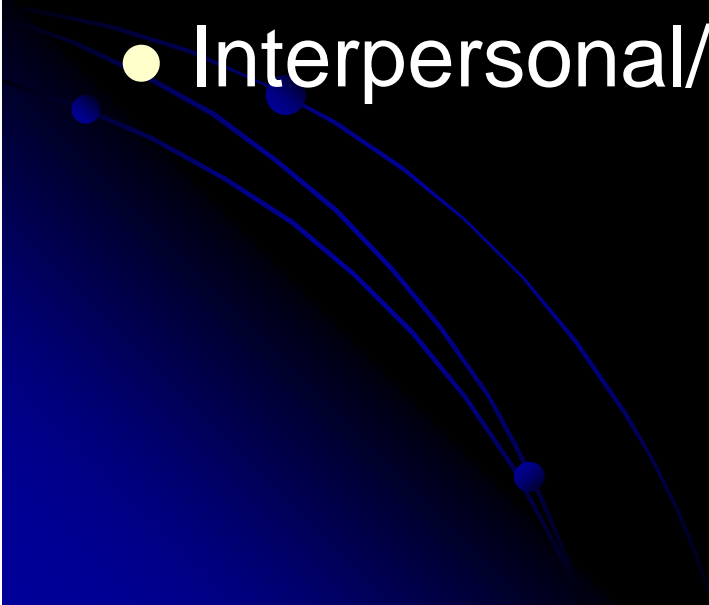
When you think you are eligible to apply, you MUST take your completed Checklist to the Health Science office at KCC. We will then contact you (likely this will be by phone), and supply you with a MStL application packet.

- You may only apply to MStL *after* you have completed all pre-requisite courses or have proof they are IP.
- Do NOT wait until January to contact me if you have not heard from me by that time and you think you are eligible to apply.


Our Process

- **Once you have completed or enrolled in all pre-reqs, we will send you an Application for Admission and the Mandatory Essay Requirement**
- **The app, essay, and \$25 application fee must be *mailed* to our office in one envelope prior to the January 15 deadline. No exceptions!**
- **Top candidates offered interviews in February/March**
- **All applicants notified of acceptance/rejection by the middle of March**

Acceptance decisions

- Academic history – 40%
 - Research/Interest (Essay) – 20%
 - Interpersonal/Communication – 40%
- 

After graduation from MStL, the result is...

- Certificate in Radiologic Technology from Mercy/St. Luke's
 - Eligibility to take the ARRT exam
 - Associate of Applied Science degree from KCC (if you took courses there or meet residency requirements)
- 

That's All Folks!

*Program policies &
info are available at:*

- <http://www.isrt.org/ResourceCenter/mstl.aspx>
- schmitdd@crstlukes.com
- 319-369-7097

