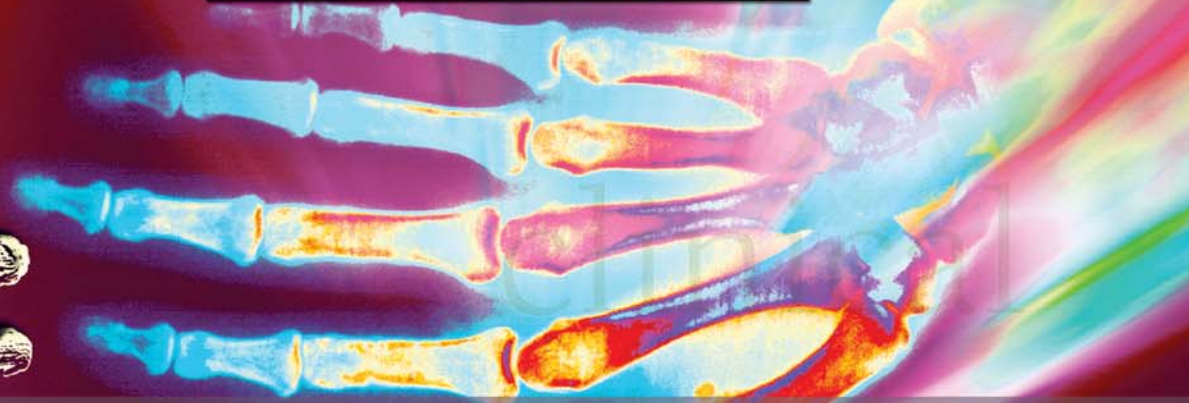
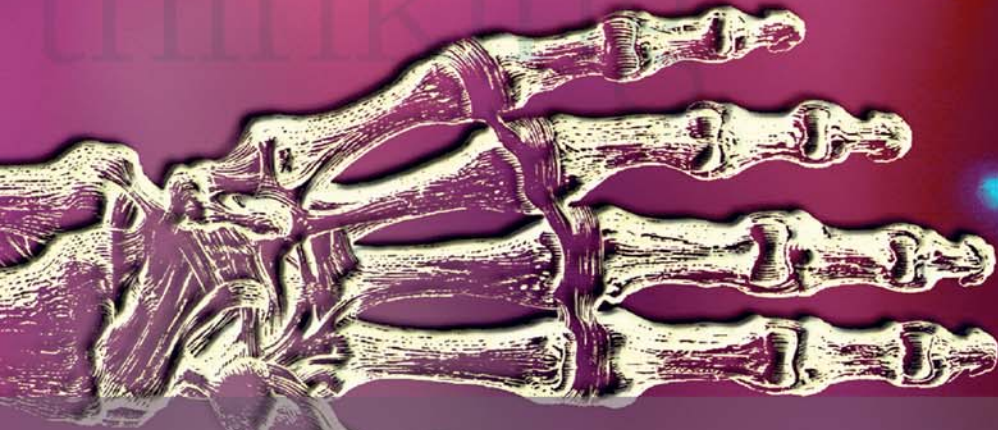


MERCY/ST. LUKE'S



School of
Radiologic Technology



MERCY/ST. LUKE'S



School of
Radiologic Technology

PO Box 3026
Cedar Rapids, IA 52406-3026
319/369-7097

A Career in
Medical Imaging



Radiologic Technology

Radiologic Technology is the art and science of applying ionizing radiation to create images of the human body. People educated in this profession are called radiographers, radiologic technologists, x-ray techs or imaging professionals, to name a few. The term “technician” is no longer considered accurate by most imaging professionals.

Radiologists are physicians that interpret these images to aid in the diagnosis of disease and injury to the body. This is a very technical, science-oriented profession that requires a very strong math and science background. People in this profession work with technologically advanced medical equipment. As a radiographer, you are also expected to provide patient care that is accurate as well as compassionate. A strong desire and ability to help others in need, in a non-discriminatory manner, is essential for success in the profession.

Advanced Education

There are advanced modality options for people interested in continuing their education within the profession. These include nuclear medicine, sonography, radiation therapy, cardiovascular interventional, computed tomography, magnetic resonance imaging, mammography, PACS administration, quality

management, education, sales and management. Most, but not all, of these modalities require you to have a radiologic technology education first. For more information about these modalities, as well as radiologic technology, visit www.asrt.org. Additionally, many other Internet resources exist to learn more about the profession.

Program Overview

The Mercy/St. Luke’s School of Radiologic Technology (MStL) is a hospital-based radiologic technology program jointly sponsored by Mercy Medical Center and St. Luke’s Hospital in Cedar Rapids, Iowa. The program begins annually in late June and is a 24-month, full-time program resulting in a certificate in Radiologic Technology. Through an articulation agreement with Kirkwood Community College (KCC), students have the opportunity to receive an AAS degree. Students are not required to pursue the AAS degree; however, the application process *must* be initiated through KCC.

Persons interested in the MStL program must have specific prerequisite college coursework prior to applying to the program. These prerequisite courses should typically take approximately one year to complete. After completion of these courses, if an applicant is accepted into and graduates from MStL, they

are then eligible to sit for the national certification examination. This exam is administered by the American Registry of Radiologic Technologists (ARRT). Graduates must meet all eligibility criteria of the ARRT to take this national exam.

The MStL program is a competency-based program that consists of technical classes as well as supervised clinical experiences. The program requires a full-time commitment of time and energy. Typically, students in the program are scheduled for classes and clinical experiences Monday through Friday for a total of 40 hours per week. The hours of attendance are primarily 7 a.m. to 3:30 p.m., although at times in the program, students are assigned evening rotations as well. There are currently no weekend or holiday attendance requirements.

Eligible applicants must meet the following criteria:

- 18 years of age upon entering the MStL program.
- Able to meet the Technical Standards of the program.
- A citizen or permanent resident of the U.S.
- Have no physical/mental impairments that would affect their ability to perform in the program.

Program Mission

We are dedicated to providing a high quality education in the profession of Radiologic Technology through the use of competency-based clinical education and comprehensive didactic techniques, and to assist our students to be an integral part of the healthcare team that provides compassionate care to the surrounding community.

Program Goals

Goal 1: Provide an education that promotes ethics, communication skills, critical thinking and professionalism.

- Students/graduates will demonstrate professionalism in clinical settings.
- Students/graduates will demonstrate effective communication skills.
- Students will perform non-routine exams on trauma patients utilizing critical thinking skills.
- Students will identify diagnostic quality images and correct non-quality images accordingly.

Goal 2: Students will possess the knowledge and skills of an entry-level radiographer to perform competently while demonstrating quality patient care.

- Students will be able to perform routine exams.

- Students will possess knowledge of procedures and patient care.
- Students/graduates will demonstrate quality care and protection to patients, selves and others.

Professional Program Courses

Professional Ethics
 Radiographic Science
 Radiation Biology and Protection
 Radiographic Physics
 Radiographic Anatomy & Procedures
 Radiographic Film Critique
 Patient Care
 Special Procedures, Equipment and Imaging
 Introduction to Radiography and Protection
 Applied Clinicals
 Advanced Procedures
 Cross-Sectional Anatomy
 Radiographic Pathology

Program Costs

Tuition - \$2600/year*
 Books - \$800 total/both years**
 Uniforms - \$600 total/both years**

*Tuition as of January 2008. Subject to change annually.

**Book and uniform expenses are approximate and subject to change.

Financial Aid

All students are eligible for Federal Title IV financial assistance. Financial aid is administered and awarded through KCC via a Consortium Agreement between MStL and KCC.

Accreditation

MStL is currently accredited by the Joint Review Committee on Education in Radiologic Technology. The JRCERT is the only agency recognized by the United States Department of Education to accredit educational programs in radiography. Interested parties may access current accreditation information at www.jrcert.org. Additional inquiries may be sent to:

JRCERT
 20 North Wacker Drive, Suite 2850
 Chicago, IL 60606-3182
 312/704-5300

Program Contacts

Dana Schmitz, M Ed, RT(R)
 Program Director
 Mercy/St. Luke's School of Radiologic Technology
 PO Box 3026
 Cedar Rapids, IA 52406-3026
 319/369-7097
www.isrt.org/mstl.htm

The following FAQ section has been designed to explain the program in more detail, including the application and selection process. If you still have questions, please do not hesitate to contact the MStL office.

1. How does the MStL program work in conjunction with KCC?

The Mercy/St Luke's School of Radiologic Technology (MStL) and Kirkwood Community College (KCC) maintain an articulation agreement wherein potential applicants complete general education courses at KCC prior to application to MStL. If selected for the MStL program, and upon graduation, MStL will grant a certificate in Radiologic Technology. KCC will award 55 SH of technical credits for the MStL program applicable toward an Associate of Applied Science (AAS) degree. All applicants should be aware that this agreement allows MStL and KCC to share records as necessary for the administration of the program. This includes transcripts from each of the institutions.

2. If I'm accepted at KCC, am I automatically accepted at MStL?

No. MStL receives numerous applications each year and accepts only 20 students from this pool, so selection is a competitive process. Acceptance at KCC into the Career Studies

Health program does *not* guarantee acceptance at MStL. Although KCC and MStL work in conjunction for the purpose of this program, there are two separate application/acceptance processes.

3. Are there any prerequisite courses for the MStL program?

Yes, the following college credit-bearing courses are required, not only for application to MStL, but also to fulfill AAS degree requirements at KCC.

Human A & P I - 4 SH
Human A & P II - 4 SH
Humanities elective - 3 SH
Intro to Psychology - 3 SH
Composition I - 3 SH
Fundamentals of Oral
Communication - 3 SH
Microcomputer Literacy - 1 SH
Intermediate Algebra - 4 SH
Medical Terminology - 4 SH

4. Do I have to complete all of these courses prior to the January 15 application deadline at MStL?

No, however, first priority will be given to perspective students who *have* completed all of the prerequisite courses by the January 15 deadline. Provisional acceptance status will be granted if you have completed the majority of

these courses and are *enrolled* in the remainder of them at the time of the January 15 deadline. If you are enrolled in the remainder of the required courses as of the January 15 deadline, proof of successful completion of these courses must be in the form of an official transcript submitted to MStL no later than June 1 if you are attending any college other than KCC. If courses in progress are not successfully completed or proof of successful completion is not received by MStL, provisional acceptance status will be revoked.

5. What is "successful completion" of courses?

Successful completion requires a grade of C- or above. Additionally, if you repeat a course more than once due to a failing grade, this course does not meet MStL program requirements. This means, if you fail a prerequisite course initially, you may repeat it and still be eligible to apply to MStL. However, if you do not successfully complete the course on the second attempt, you would not be considered eligible to apply to MStL.

6. How do I apply?

Application can only begin by attending a mandatory Program Conference to obtain an Admission Criteria Checklist. Program Conferences are held on a regular basis on the KCC campus by the MStL Program Director.

At the Program Conference, you will receive program information along with the Admission Criteria Checklist. The MStL program will be explained in detail, as well as the application and selection process. All application requirements outlined in the Admission Criteria Checklist must be completed prior to applying to MStL. These requirements include a KCC application and completion of placement tests. Proof of a college degree may be substituted for placement tests. Only after completing the Admission Criteria Checklist are you eligible to apply to MStL.

7. How do I register for the Program Conference?

Preregistration is required to attend a Program Conference and may be accomplished by visiting the KCC website at www.kirkwood.edu. Go to the "Career Studies Health" page and follow the Program Conference prompts for available dates and registration.

8. What are the MStL pre-application guidelines and minimum requirements outlined in the Admission Criteria Checklist?

Once you have attended a Program Conference and obtained the Admission Criteria Checklist, you must officially apply to KCC, if you have not already done so. This can be accomplished on the KCC website. You *must* specify Career

Studies Health as your intended major. If you are a current KCC student, you must change your intended major to Career Studies Health to begin the process for the Radiologic Technology program. You may contact Admissions at KCC if you need assistance with this.

You can meet the minimum requirements for the program in one of three ways. First, if you have already earned an associates, bachelors or higher college degree, you must still apply to KCC for the Career Studies Health major and have official transcripts sent to KCC. Proof of any of these college degrees will exempt you from taking the required placement tests. However, you must still meet the prerequisite course requirements listed in Question #3 to be eligible to apply to MStL.

Second, if you have successfully completed Composition I, Intro to Psychology *and* Intermediate Algebra, you are also exempt from taking placement tests. If you have attended other colleges, it is imperative that you have official transcripts sent to KCC to be evaluated for transfer credit.

If you do not have a college degree or the three courses listed in the preceding paragraph, you must meet the minimum requirements through placement tests.

Specifically, you must submit ACT scores or take a COMPASS test. A minimum ACT score of 18 in the English and Math sections and 19 in the Reading section is required to be considered eligible for application to the MStL program. If you have not taken the ACT, you must take the COMPASS test. To meet the minimum MStL application requirements, you must score a minimum of 70, 82 and 43 on the Writing, Reading and Math sections respectively. All ACT and COMPASS scores must be from within the past three years.

If you complete each of these steps and meet the minimum requirements, you may then pursue the prerequisite classes required for the MStL program. You can only apply to MStL after successful completion of all prerequisite courses, or after providing enrollment confirmation in the remainder of the prerequisite courses as outlined in Question #4. As long as your completed application packet is received by MStL by January 15, you will be considered for the class beginning in June of the same calendar year.

These pre-application guidelines are only used to determine whether or not you have met the minimum qualifications. Meeting these requirements does not guarantee acceptance into MStL, but you will be considered qualified to continue in the process. These criteria are

not used for any other purpose in the selection process.

9. I have completed the Admission Criteria Checklist and all of the prerequisite courses. How do I apply to MStL?

When you have completed the prerequisite courses or have enrolled in any remaining prerequisite courses, you must take the Admission Criteria Checklist to the Health Sciences office at KCC. They will copy the checklist and instruct you to contact MStL directly for program application materials. *MStL does not accept any applications until this point in the process.*

10. What does the application process at MStL consist of?

Application materials include the application, mandatory essay requirement and payment of a \$25 non-refundable application fee. *All three items must be returned in one packet upon completion.* All materials must be postmarked by January 15 to be considered eligible. *There are no exceptions to this postmark deadline.*

11. What happens after MStL receives my application packet and all transcripts?

After the January 15 application deadline, application materials are reviewed and scored

by the Program Director in conjunction with the Admissions Committee.

Prerequisite course transcripts are evaluated to determine if you meet the following criteria:

- a. You have completed all prerequisite courses with a grade of C- or above
- b. Your GPA is a minimum of 2.50 from all prerequisite courses
- c. You attempted no prerequisite course more than twice

You will be considered unqualified if you do not meet *all three* of the criteria. You will be notified of this decision. If you are currently enrolled in the remainder of the prerequisite courses, the Admission Committee will apply the criteria above to the courses you have completed and consider you conditionally qualified to continue in the process. Upon completion of any courses you are enrolled in, your transcript will be re-evaluated. If you do not meet all three criteria listed above at that time, you will be considered unqualified.

Next, your GPA and essay are scored by the committee to determine the top 40 candidates who will be offered a personal interview. Rated interviews will be conducted beginning in late February. Once all interviews are completed, the top 20 applicants will be offered conditional positions in the program. All interviewees will be notified of the committee's decisions by

early April. All applicants will be kept informed of their standing throughout the process via mailings.

The MStL program is an equal access/equal opportunity institution in compliance with state and federal laws and does not discriminate on the basis of sex, race, color, creed, national origin, age, disability, sexual orientation or marital status.

12. What do you mean by “conditional positions”?

If you are accepted, you will be required to have a physical examination, provide proof of required immunizations and complete a criminal background investigation. If you fail to meet any these criteria, you will not be allowed to begin the program.

13. When does the MStL program begin? Classes begin in late June and continue for 24 consecutive months. Graduation typically occurs in mid-June, two years after beginning the program.

14. What if I have taken some or all of the prerequisites at another college? You must still apply to KCC and follow the process outlined above. KCC has the sole decision whether or not to accept classes as transfer credit. If you desire the AAS degree

from KCC, you must complete 16 semester hours of credit at KCC to meet established residency requirements.

*Information is current as of 1/08
but is subject to change without notice*